

# Mongla Upazila Profile

## District: Bagerhat



**December 2014**

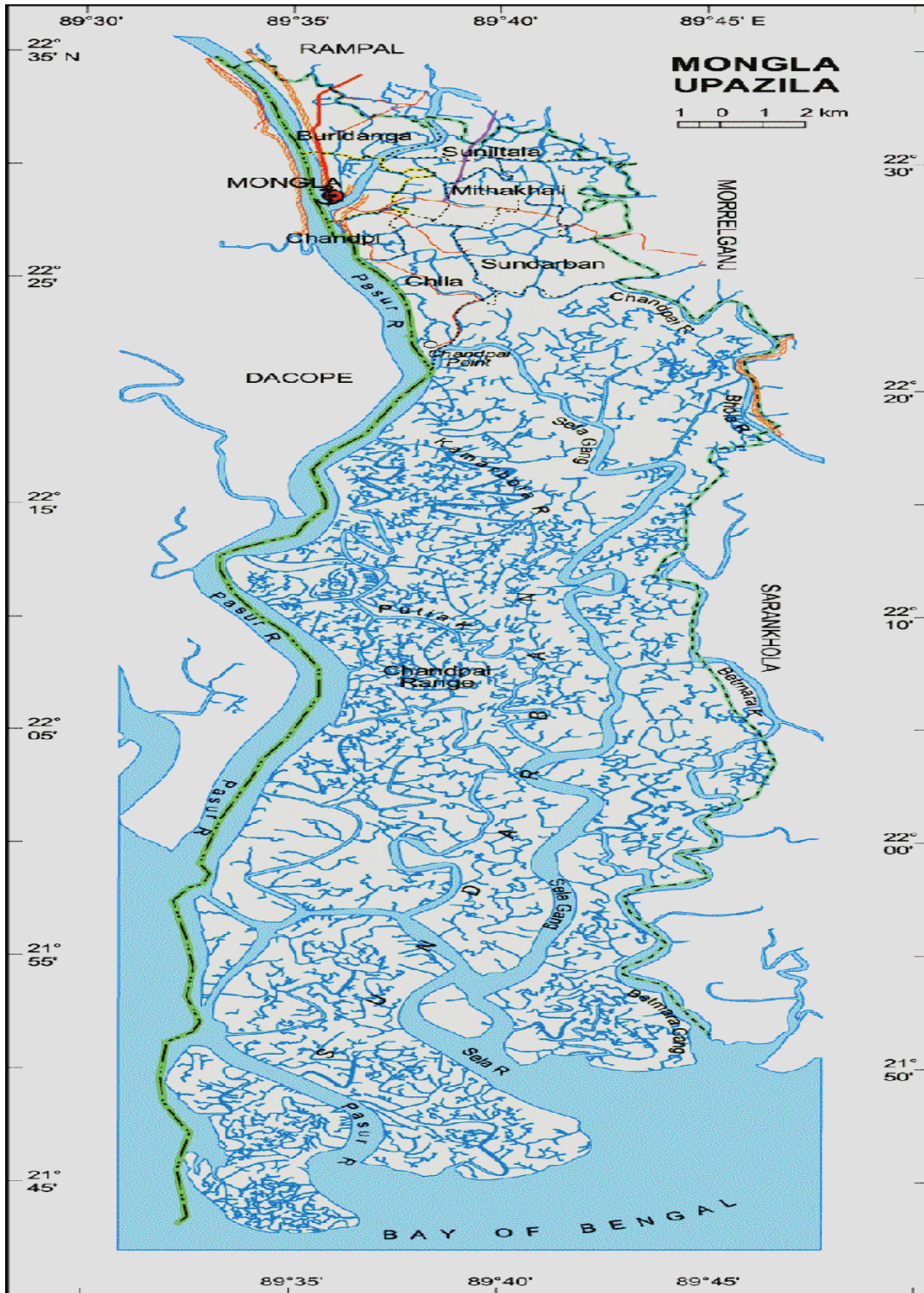
**Local Capacity Building and Community  
Empowerment (LCBCE) Programme.**

**Supported by: UNICEF**

## Table of Content

SI #	Content	Page #
1.	Union Map	03
2.	Background	04
3.	Socio-economic condition	04
4.	Geography	04
5.	Disaster/ Vulnérabilités	05
6.	Hard-to-Reach Areas.	05
7.	Population in general	05
8.	Child Population	06
9.	Snapshot of situation of children and women in the union	06
10.	Health and Nutrition	07
11.	Situation of Birth Registration, Disability and Child Marriage	08
12.	Child Labour	08
13.	Education: Pre Primary, Primary and Secondary level	09
14.	Water and Sanitation	10
15.	Service by NGOs	10
16.	Table 1.1: Union wise Sex disaggregated population data	12
17.	Table 1.2: Age specific child population	12
18.	Table 2.1: Union wise number of Children fully immunized or left out	13
19.	Table 2.2: Union wise number of pregnant women with status of IFA intake	13
20.	Table 2.3: Infrastructure and facilities/ Health & FP	14
21.	Table 2.4 and 2.5: HR status of Health and FP	14
22.	Table 3.1: Situation of birth registration child labour, disability	15
23.	Table 4.1: Pre-primary Education coverage	15
24.	Table 4.2: Primary Education coverage	16
25.	Table 4.3: Secondary education coverage	16
26.	Table 4.4: Infrastructure and facilities of Educational institution	17
27.	Table 4.5: HR status of Institution	17
28.	Table 5.1: Source of safe water and water Coverage	18
29.	Table 5.2: Sanitation Coverage	18
30.	Mapping of NGO Programmes	19
31.	Information of partner NGOs for UNICEF Assisted project	22
32.	Partner Programme mapping	22

# Map of Mongla upazila



## 1. Background, Socio-economic conditions, Disaster Vulnerabilities,

### 1.1 Background

#### 1. Introduction/Background:

Mongla became a police station on 19th September 1976 and was upgraded to an Upazila on 14th September 1983. Nothing is definitely known about the origin of the upazila name. It is said that in 1950 a Greek ship was anchored near the present place of Mongla Port by mistake. The captain of ship came out with his speedboat and tried to find out the right direction along the Passur River and after a short while met one hindu priest named Mongal Rhishi at the present location of the Mongla port. He declared this location as the Mongla port. Mongla upazila bears a special significance as it is the second international Sea Port of the Country and the Chandpai range of "Sundarban" Forest area. Like other upazilas of Bagerhat Zila the original inhabitants might be admixture of the non-Aryan the Dravidian and the Mongolian races. Total area of the upazila is 1461.20 sq. km out of which 1083.00 sq.km of forest area.

#### 1.2 Socio-economic condition:

Like other rural areas of this district about 60-70% per cent (approx.) people are living below poverty line. Most of the people at Mongla engage in agriculture, fishing, day labor, Port labor, shirmp farming and honey collection from Sundarban. The main crops are paddy, vegetable and main export items are paddy, fish (shrimp) and hone. Agriculture and fishing is considered as major livelihood, children are engaged in fishing boats resulted deprivation of their rights which is capital concern of education.



**Literacy:** Average literacy 57.20%; male 58.90%, female 55.30%.

**Historical Events:** Mongla Sea port and Chandpai forest range both are contributing in economics of Mongla

**Industries/Manufactories:** EPZ 1, Cement Factory 4, LP Gas Factory 3, Auto rice mill 8, Husking rice mill 6 and Flower mill 2 and all are contributing in economics of Mongla.

**Source: National Population Census 2011**

#### 1.3 Geography:

The upazila occupies an area of 1461.20 sq. km out of which 1083.00 sq.km of forest area. It lies between 22<sup>0</sup>33' and 21<sup>0</sup>49' north latitudes and between 89<sup>0</sup>32' and 89<sup>0</sup>44' east longitudes. It also bounded on the north by Rampal upazila, on the east by Morrelgonj & Saronkhola upazila, on the south by Bay of Bengle and on the west by Dacop Upazila of Khulna District. This upazila is highly disaster prone area among the Bagerhat District

## 1.4 Disaster and Vulnerabilities:

The upazila is situated in bank of Pasur big river and opposite side of Sundarban. It is a coastal belt and near to bay of Bengale so Cyclone, heavy rainfall, and tidal wave hits almost every year and affects the people, damages their houses and crops, increase their sufferings which make them poor/ultra-poor. Poverty is persistent due to natural disaster and low income growth in the upazila. In the rainy season paddy, vegetable and other crops usually suffered by water logging. Fish farmer's loss their fishes due to overflow of water. There



are 21 Cyclone shelter and those are located at different vulnerable villages. The Upazila Disaster Management Committee (UzDMC) has assessed the disaster vulnerabilities focused on local context and developed disaster preparedness and response plan in the last year with the support of LCBCE - UNICEF. They also arranged training on disaster preparedness for the UDMC and UzDMC. They also observed NDPD and IDDR in every year to aware the mass community people. The upazila has 64 well equipped CPP units and 960 (Male = 640, Female 320) trained volunteers.

## 1.5. Hard-to-Reach Areas:

There is hard to reach areas in this upazila as internal communication. Carpeting, solling and earthen road linked with almost all villages. Motor cycle, van and Easy Bick are usually used within the upazila. People do not face much difficulty to have access to social service facilities. Distance and communication mood are given below:

Sl#	Name of union	Distance from Upazila HQ to union HQ (KM)	Mood of Communication
1	Burirdanga	10.00	Motor cycle, Van, Easy Bick
2	Chandpai	1.50	Motor cycle, Van, Easy Bick
3	Chila	15.00	Motor cycle, Van, Easy Bick
4	Mithakhali	16.00	Motor cycle, Van, Easy Bick
5	Suniltala	10.5	Motor cycle, Van, Easy Bick
6	Sundarban	14.5	Motor cycle, Van, Easy Bick

## 2. Population Profile:

### 2.1 Population in general

According to population Census 2011 the upazila has a total population 1, 36,588, Male 71,492, female 65,096 in 32383 HH, (Muslim 102298, Hindu 29426, Christian 4837, Buddhist 21 and others 6) and population density is 1018 per Sq Km. But there is a variation on the size of HH and population as "the holding assessment 2012-2013" which was conducted by union parishad,

*The details are shown in the Table 1.1 in the Annex I.*



## 2.2 Child Population:

According to the Census 2011, total child population in the upazila from 0 to 19 years are 50468 which is 36.95% of total population (Age 0-4 is 10241, 5-9 is 13209, 10-14 is 15860 and 15-19 is 11128). Community data provides more age specific information than census data and the total child population from 0 to 18 years are 31,257, 0-1 year is 1955, 1 to 2 years 2068, 5 to 6 years 3465 and 6 to 10 years 9199 (This figure only for rural area). This gives an increased population number than Census as usual.



Table 1.2 shows the details.

### Part B: Situation of Children and Women

The following chapters describe the sector wise facilities and situation of children and women in the rural area (Only six union) of Mongla upazila. The following table gives a snapshot of the situation of children and women in the union:

**Table 1: Snapshot of Situation of children and women in the union**

Indicators	Total	Received	Not Received
Number of pregnant women who have received / not received IFA tablets	542*	542*	Intake @ 100 table 334 mother.
No of pregnant mothers who have completed 4 ANC visits	542*	187*	355*
No of delivery take place in health centers (institutional delivery)	0	55*	No data
No of 1 year old children having / not having birth certificates	1589**	881**	583**
No of birth registration within 45 days of birth	0	139**	
No of 1 year old children who have completed all the vaccines and left out	1589*	1246*	407*
No. of children <5 with / without recommended weight and height	0	0	No data
No. of children in PPE/ out of PPE	2483*	1741*	742*
No. of children in / out of school ( Primary)	9222*	9207*	15*
No. of children in / out of school (Secondary)	-	13046*	No data on out of school
No of children engaged in labor	-	511**	
No. Children with disabilities	-	1219**	
No. of children not living with families	-	87**	No acquired data
No of children below 18 who are married	-	82	No data
No of households with / without access to safe water sources	24952**	15720**	9232**

No of households with / without sanitary latrines	24952**	18449**	6503**
No of female headed households	0	0	No data

**\*administrative data, \*\*community data \*\*\*BRIS data as of January 2014**

The upazila has 542 pregnant women and as of November 2014 all of them have visited the health center at least once for checkup and receive different amount of IFA tablet. However only 187 pregnant women have completed 4 ANC visits and 355 are not receive the full package of service due to some of them not eligible for 4 ANC (Pregnancy period is 4-8 months), few are long distance from residence to health Centre etc. 217 numbers of normal delivery take place in health centers (institutional delivery) but there is no facility for surgical. The table above shows that 407 children do not have full coverage of vaccination out of 1,589 children (administrative data). Data are not available on nutritional status of children in any form. Community do not have much idea on this however, they identify healthy (fatty) and unhealthy (thin) children and think that most of the children are healthy. Health centers do not record the height or weight of the children. The table above also shows that 881 children of 1 year do not have birth certificate out of 1589 children (Community data). Birth registration within 45 days are only 139 but overall birth registration status of Mongla upazila is very good. 742 children are not enrolled in PPE class, and 15 children of school going age at primary level are not enrolled in the school. A significant number of children are out of secondary education in the upazila but there are no data in any form. Child marriage is occurred but it is not recorded as the age is recorded above 18 years in the register during marriage.

### 3. Health and Nutrition

#### 3.1 Situation of Children and Women in the Upazila

According to the health section 1216 children have fully vaccinated out of 1,589 of 1 year age and 407 children dropped from full vaccination coverage. As per community data 311 children are out of full package of vaccine out of 2062. Community think that every child is vaccinated however, there might be a few left out children from fully vaccinated package.



*Table 2.1 shows the Number of Pregnant women with status of IFA intake in Annex II.*

The upazila has 542 pregnant women as of November 2014. Out of this only 187 pregnant women have completed 4 ANC visits and 334 have consumed at least @ 100 IFA tablets during last six months



*Table 2.2 shows the Number of Pregnant women with status of IFA intake in Annex II.*

Few institutional delivery takes place in the upazila level. These deliveries mostly occur in case of complicity or in the case of women from well off families or who are very aware.

**3.2 Facilities and services available in the Upazila:** The Upazila has one health complex 6 Family Welfare Center (FWC), 11 functional Community Clinics (CC), 48 Satellite Clinics and 144 EPI sites. There are health services in the Upazila provided by NGOs which are mainly community awareness.

*Table 2.3 in annex II shows the available facilities in the Upazila.*

### **3.3 Status of Human Resource:**

**3.3.1 Department of Health:** The Upazila is served by 4 MO, 3 SACMO, 1 health Inspector (HI) 3 Assistant Health Inspector (AHI), 15 Health Assistants and 11 CHCP. Currently 12 MO, 3 SACMO, 1 HI, 3 AHI and 6 HA position are vacant. Shortage of human resources hampers the regular services of pregnant mothers and children.

*Table 2.4 in annex II shows the HR status of Health services in the upazila*

**3.3.2 Department of Family Planning:** The upazila is served by 1 Family Planning Officer, 5 SACMO, 6 Family Welfare Volunteers (FWV), 6 Family Planning Inspector (FPI) and 21 Family Welfare Assistants (FWA). At present there are 1 MO, 1 SACMO, 2 FWV and 6 FWA positions vacant.

*Table 2.5 in annex II shows the HR status of Family Welfare services in the Upazila.*

## **4. Situation of Birth Registration, Disability, Child Marriage and Child Labour**

**4.1 Birth Registration:** A significant number of children of 0-5 years old do not have birth certificate. BRIS data (as of December 2014) shows that 3631 children which is 2.36% of total population were registered but each of them could not receive birth certificates. As BRIS data total estimated population is 144399 and registered 153054 (99.57%) but certificate handover only 18.27% (2782 person). Few number of children registered within 45 days of birth. All the Union Parishad and pourashava is well equipped for providing services for ensuring birth registration of children. It is served by a Secretary, and two UISC Entrepreneurs. This progress happened with the support of the District, Upazila administration, UNICEF and NGOs joint efforts. The UP and pourashava is providing free services to the children of below two years.

**4.2 Children with Disability:** There are 1219 children with disability in the six union of Mongla upazila. Few of them are attending school and many of them do not have opportunity to attend school as the school does not have physical structure or friendly environment that encourages them to stay. Data are not available neither with the community or the government department on how many children do not attend in secondary school.

**4.3 Child Marriage:** Though child marriage occurs but it is not recorded as the age is recorded above 18 years in the register during marriage.

**4.4 Children detached from families:** Some children are detached from their family. However, the community or Government department do not have information on whether these children are all orphan or where they are engaged. The upazila administration is trying to collect the real information from union and accordingly make a plan for their survival.

**4.5 Child Labour:** According to the community the Upazila has 511 children who are engaged with informal labour force. Children are mainly engaged in agricultural works, fishing and non-formal sector like in the tea stall and small hotels and restaurants and these children are out of schools. Though some of the children are getting conditional cash transfer



from the government supported by UNICEF, it is not able to cover all of the children out of school.

## 5. Education: Pre Primary, Primary and Secondary Education

**5.1 Coverage of Education:** According to the survey conducted by the DPE, the upazila has a total of 2483 pre-school aged children of which 1741 children are enrolled in pre-primary class run by government and non-government schools. Table 4.1 shows that 742 children are not enrolled. According to the community people, there are many children who do not attend pre-primary class because of lack of early learning centres or school within their reach (within a kilometer) and for poor road communications.



At primary level there are 9222 children of 6-10 years old and out of them 9207 are enrolled in the primary schools run by Government and NGOs. According to this data, there are only 15 children who are not enrolled in the primary schools. Many children are attending Madrassa for their education both at primary and secondary level and data are not available.

At secondary level, there are 13046 children enrolled in different schools (Girls: 7372 and boys: 5674). According to the Table 4.3 there are all children are attend in school actually they have no any data how many children 9Age 11-16) in the upazila. If we consider the child population data (Census 2011), the secondary school going children are 17772 or more and the school enrolment is only 12826 which means that a large number of children (4946) are not enrolled or do not attend in or dropped out from secondary education.

*Table 4.3 shows the data on facilities in Annex IV.*

**5.2 Available Facilities:** The upazila has 68 Government Primary Schools (GPS), 1 community school, 40 NGO schools run by different NGOs and all are running to coverage the pre-primary and primary education. There are some villages in the upazila without primary school those are mention in table 4.4. However, there are some schools in those villages run by NGOs to cover only PPE of one class within 1-5. The upazila has 29 secondary schools and 13 secondary level madrasa to cover the children of Mongla upazila. Moreover they have 4 collage for higher education.

*Table 4.4 shows the data on facilities in Annex IV.*

**5.3 HR status in the Education Sector:** There are 68 posts for Head Teachers and 220 posts for Assistant Teacher sanctioned in 68 GPS and 1 Head Teacher and 13 Assistant teacher posts are vacant. According to the Government policy standard, the teacher student ratio for PPE is 1:30 and for primary class the ratio is 1:45. The data in table 4.5 shows that there are 1741 children enrolled in 68 GPS and some NGO school and a few schools do not follow this standard and the average class size of these schools is more than 40 PPE children /teacher. Discussion with different school teachers and community, it is found that a few of the schools are overcrowded and more than 50 children are enrolled in each class. This overcrowds hampers the learning process of the children.

## 6. Water and Sanitation

**6.1 Safe Water Facility:** DPHE does not have record on NGO and private installed number of tube wells, Rain water harvesting, PSF and pipe line supply water points in the upazila. According to the Census 2011, 4.4% (1404) households have tube wells water source facilities 6.6% (2106) HH used tap water (running water) and 88.9% HH used others source. This figure widely varies with the DPHE data. Community data shows that the (only six union) upazila has 181 Tap + PSF + tube wells, 7617 RWHS in HH and community level and about 63% HH are getting safe water year the round. In rainy season about 8 month all HH have access to safe drinking water.



**Sanitation coverage:** Sanitation coverage in the Upazila is good. The upazila (only six union) has 23446 (Census 2011) households where 10084 households (43%) have hygienic latrines, 12173 (91.92%) households have unhygienic latrines and 1196 households do not have any latrines. Community data widely varies with this data. Table 5.2 in Annex V shows that 18449 households (73.94%) have hygiene latrines, 5255 households use unhygienic latrines and 268 households do not have any latrines out of 24952 households

**Status of HR:** The Upazila is served by 1 SAE-DPHE, 2 Masson and 3 tube well mechanic those are responsible only for the DPHE provided water points.

### Services by NGOs:

There are about 21 NGOs including are working in the upazila on health, education, child protection, agriculture, disaster preparedness, community awareness, local government strengthening, water and sanitation etc. JCF is implementing Child protection project in the upazila.

**Detailed data on the profile are presented in the next pages as annex.**

# ANNEXURES

**ANNEX I**

**Table 1.1: Sex disaggregated Population data**

Name of Union	Population and Housing Census 2011				Population according to Community			
	No. of HH	Total	male	female	No. of HH	Total	male	female
Burirdanga	3827	15311	7810	7501	3419	15269		
Chandpai	4248	17662	8770	8892	4482	17662		
Chila	4373	20973	12103	8870	4688	20500		
Mithakhali	4292	17139	8557	8552	4790	19020		
Sunailtala	2439	8832	4293	4539	2744	10115		
Sundarban	4277	16834	8352	8482	4829	20367		
Mongla Pourashava	8927	39837	21607	18230	8927	39837		
<b>Total = 6</b>	<b>32383</b>	<b>136588</b>	<b>71492</b>	<b>65066</b>	<b>33879</b>	<b>142770</b>		

**Note: The UP counted HH and total population in 2013-2014**

**Table 1.2: Age specific child population**

Union	# of Children age structure according to Census 2011					Age specific number of children according to the community				
	Total Population	0-4	5-9	10-14	15-19	<1	1-2	5-6	6-10	10-18
Burirdanga	15311	1047	1372	1484	1155	226	295	362	860	1810
Chandpai	17662	1364	1690	2081	1469	386	298	504	1492	3068
Chila	20973	1508	1898	2144	1305	369	509	1052	2427	4690
Mithakhali	17139	1289	1761	2036	1347	286	293	253	2645	5126
Sunailtala	8832	713	922	1047	653	186	182	852	190	508
Sundarban	16834	1452	1901	2168	1235	502	491	442	1585	2875
Mongla Pourashava	39837	2868	3665	4900	3964	-	-	-	-	-
<b>Total = 6</b>	<b>136588</b>	<b>10241</b>	<b>13209</b>	<b>15860</b>	<b>11128</b>	<b>1955</b>	<b>2068</b>	<b>3465</b>	<b>9199</b>	<b>18077</b>

**Total children: 50468 including pourashava:**

**ANNEX II**

**Table 2.1 Number of Children Fully immunized or left out**

Administrative unit		Administrative data			Community data		
Sl #	Union	Number of Children<2 yrs	Number of children received all the vaccines	Number of children left out	Number of Children<2 yrs	Number of children received all the vaccines	Number of children left out
1	Burirdanga	272	254	18	295	236	59
2	Chandpai	267	242	59	298	281	17
3	Chila	295	279	16	509	432	77
4	Mithakhali	258	154	104	269	239	30
5	Sunaitala	155	95	60	200	199	1
6	Sundarban	342	192	150	491	364	127
	<b>Total = 6</b>	1589	1216	407	2062	1751	311

Note: Immunization rate is very low in Mithakhali union only 59% and Sonaitala is 61%

**Table 2.2: Number of Pregnant women with status of IFA intake**

Administrative unit		Administrative data (Source: Family Planning Office)				Community Data (Source: UP Office)			
Sl #	union	No. of pregnant women	No. of pregnant women completed 4 ANC visits in the last six months	No. of pregnant women have received IFA Tablets	No. of pregnant women have consumed all IFA Tablets	No. of pregnant women	No. of pregnant women completed 4 ANC visits in the last six months	No. of pregnant women have received IFA Tablets	No. of pregnant women have consumed all IFA Tablets
1	Burirdanga	117	41	117	57	137	51	137	103
2	Chandpai	91	55	91	63	162	102	127	89
3	Chila	81	35	81	65	160	63	160	91
4	Mithakhali	94	24	94	72	120	29	120	69
5	Sunaitala	65	4	65	30	106	38	106	75
6	Sundarban	94	28	94	47	245	52	245	165
	<b>Total = 6</b>	542	187	542	334	930	335	895	592



**Table 2.3: Available Facilities for Health and Family Planning**

Union	Upazila Health Complex	FWC	UHSC/RD	CC	EPI Outreach site	Satellite Clinic	EPI site merged with SC	NGO Clinic	Remarks
Burirdanga	-	1	-	2	24	8	8	-	
Chandpai	1	1	-	2	24	8	8	-	
Chila	-	1	-	2	24	8	8	-	
Mithakhali	-	1	-	2	24	8	8	-	
Sunaitala	-	1	-	1	24	8	8	-	
Sundarban	-	1	-	2	24	8	8	-	
Total = 6		6		11	144	48	48	-	

Source: Upazila Health staff

**Table 2.4: HR Status of Health Services**

Union	MO		SACMO			HI		AHI		CHCP		HA		
	San	exist	San	Exist	Vac	San	Exist	San	Exist	San	exist	San	Exist	Vac
Burirdanga	1	0	1	1	0	-	-	1	1	2	2	3	2	1
Chandpai	1	0	1	0	1	-	-	1	1	2	2	3	3	0
Chila	1	0	1	0	1	-	-	1	0	2	2	4	3	1
Mithakhali	1	0	1	0	1	-	-	1	0	2	2	4	3	1
Sunaitala	1	0	1	1	0	-	-	1	1	1	1	3	2	1
Sundarban	1	0	1	1	0	-	-	1	0	2	2	4	2	2
Upazila Health Complex	10	4	-	-	-	2	1	-	-	-	-	-	-	-
	16	4	6	3	3	2	1	6	3	11	11	21	15	6

Source: Department of Health

**Table 2.5: HR Status of Family Planning Services**

Union	MO		SACMO		FWV		FPI		FWA		
	Sanc	Exis	Sanc	Exis	Sanc	Exis	Sanc	Exis	San	Exis	vac
Burirdanga	-	-	-	-	1	1	1	1	3	1	2
Chandpai	-	-	-	-	1	1	1	1	6	5	1
Chila	-	-	-	-	1	0	1	1	5	5	0
Mithakhali	-	-	-	-	1	1	1	1	6	5	1
Sunaitala	-	-	-	-	1	1	1	1	3	3	0
Sundarban	-	-	-	-	1	0	1	1	4	2	2
Upazila Health Complex	1	0	6	5	2	2	-	-	-	-	-
	1	0	6	5	8	6	6	6	27	21	6

Source: Department of Family Planning

ANNEX III

**Table 3.1: Situation of Birth Registration, Child Labour, Disability and Children detached from Family (কি মিলিওন: RbabeÜb, কি ক, cZedÜv I cnievi t\_tK veifObaki t` i mSLv)**

Name of union	Number of children of 1 year who have birth certificate	Number of children engaged in child labour	Children with disability	Number of children are detached from family
Burirdanga	88	24	218	14
Chandpai	126	44	65	27
Chila	186	198	30	-
Mithakhali	55	46	319	-
Sunaitala	96	32	30	-
Sundarban	330	167	557	46
<b>Total = 6</b>	<b>881</b>	<b>511</b>	<b>1219</b>	<b>87</b>

**Table 4.1: Pre-primary Education Coverage (cK cÜgK কিয়)**

Name of Union	Number of PPE run Government Primary School	Number of PPE Centre run by NGO	5-6 eQi eqmx কি i mSLv Children of 5-6 years	cKcÜgK tkYtZ MgbKvi x কি i mSLv Number of children enrolled in the PPE class			`dj hvqbv Ggb কি i mSLv Children do not attend school
				tgtq Girls	t0tj Boys	tgvU Total	
Burirdanga	8	-	270	87	93	180	90
Chandpai	6	7	310	54	49	103	207 enrolled in NGO school
Chila	12	11	539	246	241	486	53
Mithakhali	14	11	414	182	203	375	39
Sunaitala	6	3	167	68	65	133	34 enrolled in NGO school
Sundarban	15	8	298	143	122	237	33 enrolled in NGO school
Pourashava	8	0	485	98	129	227	258 enrolled in NGO school
<b>Total</b>	<b>69</b>	<b>40</b>	<b>2483</b>	<b>878</b>	<b>902</b>	<b>1741</b>	

**Note:** NGO 40 are running PPE Centre in selected union of Mongla upazila. They have no data how many children are in catchment area those are in 5-6 years old.

ANNEX IV

**Table 4.2: Primary Education Coverage (চৌদ্দক ঝড়)**

Name of Union	Number of Government Primary School (GPS)	Number of Community/ NGO school	Children of 6-10 yrs	Number of children enrolled in the primary school			Number Children do not attend school
				Girls	Boys	Total	
Burirdanga	8	-	848	422	426	848	-
Chandpai	6	7	607	307	300	607	-
Chila	12	11	1778	887	889	1778	-
Mithakhali	14	11	1761	909	839	1748	13
Sunailtala	6	3	732	385	349	732	-
Sundarban	15	8	2160	1125	1035	2160	-
Pourashava	8	0	1336	706	628	1334	2
<b>Total</b>	<b>69</b>	<b>40</b>	<b>9222</b>	<b>4741</b>	<b>4466</b>	<b>9207</b>	<b>15</b>

**Table 4.3: Secondary Education Coverage (গ্বাংক ঝড় মসৃর্শ Z\_)**

Sl #	Name of Union	Numbers of Secondary School	Numbers of Secondary level Madrasa	Enrollment			Out of school children
				Girls	Boys	Total	
1	Burirdanga	5	1	989	911	1900	No data for Out of School children.
2	Chandpai	2	3	908	433	1341	
3	Chila	4	1	719	617	1336	
4	Mithakhali	5	1	1013	455	1468	
5	Sunailtala	1	1	261	197	458	
6	Sundarban	3	2	1037	792	1829	
7	Pourashava	9	4	2445	2269	4714	
<b>Total</b>		<b>29</b>	<b>13</b>	<b>7372</b>	<b>5674</b>	<b>13046</b>	

Source: Upazila education officer

**Table 4.4: Number of Educational Institutions (কম্বিডব মসুঁ Z\_)**

SI #	Name of Union	Number of Primary School					# of Secondary School		Name of Villages without primary School
		#s of GPS	#s of Com. School	#s of KG School	Ebteda i-e Madrasa	NGO Operated school	#s of Secondary school	#s of Madrasa (Secondary level)	
1	Burirdanga	8	-	-	-	0	5	1	Burirdanga union: Bidyarbahan, Chakanerkul, Bhaterabad Burirdanga, Chandpai: D. Kainmari Chila: D. Joymonirkol, Maddy Joymonirkol, Mithakhali: Purbo/pachim Datter Meth, Satghariya, Bashurkhanda, Goalirmeth, Sonaitala: Baro Sunaitala, Amratala Sundarban: Katakali, Digraj, Dhalirkhanda, Aga Madurpalta, Chaterhat, Teghoria, Golbunga
2	Chandpai	5	1	-	-	7	2	3	
3	Chila	12	-	-	-	11	4	1	
4	Mithakhali	14	-	-	-	11	5	1	
5	Sunaitala	6	-	-	-	3	1	1	
6	Sundarban	15	-	-	-	8	3	2	
7	Mongla Port Pourashava	8	-	-	-	0	9	4	
<b>Total</b>		<b>68</b>	<b>1</b>	<b>-</b>		<b>40</b>	<b>29</b>	<b>13</b>	

**Source:** Upazila Primary and secondary Education office

**Table 4.5.: HR status in Primary and Secondary education in the union (গবে মসুঁ এর কয়ক মসুঁ Z\_)**

Total School	Head Teacher		Assistant Teachers				
	Sanctioned	Existing	Sanctioned	Existing	Female	Male	Vacant
<b>GPS =</b>	68	67	220	207	140	67	13
Secondary School=	29	29	172	120	41	120	11
Madrasa =	13	13	159	150	24	126	9

**Source:** Upazila primary and secondary Education office

## ANNEX V

**Table 5.1: Sources of safe water (বিষ্ণু কবি ড্রম)**

Administrative unit		Census 2011						Remarks
Sl. no.	Name of Union	% of HH covered by Tube well + tap water	#s of PSF and Tap of supply water	#s of RWHS	Number of water source are not functioning	Number of tube wells are arsenic contaminated	% of HH have access to save water	
1	Burirdanga	24.6%	31	1125	31	0	70%	According to UP and community information 100% HH get sufficient safe water in rainy season about 8 months but in dry season about four month approx. 30%-40% HH use pond water
2	Chandpai	0.5%	29	928	05	0	70	
3	Chila	3.6%	23	1634	08	0	60	
4	Mithakhali	5.7%	25	1685	25	0	60	
5	Sunaitala	0.2%	25	656	05	00	60	
6	Sundarban	3.6%	48	1589	48	0	60	
<b>Upazila average</b>		<b>11%</b>	<b>181</b>	<b>7617</b>	<b>122</b>	<b>0</b>	<b>63%</b>	

**Table 5.2: Sanitation coverage (মিষ্ণু কবি ড্রম)**

Administrative unit		Census 2011					Community Data/UP office			
Sl. no.	Name of Union	HH	# of HH have hygiene latrines	# of HH have un hygiene latrines		# of HH without hygiene latrines	HH	# of HH have hygiene latrines	# of HH have un hygiene latrines	# of HH without latrines
				non water-sealed	Non-sanitary					
1	Burirdanga	3827	2435	1174	145	73	3419	2338	1006	75
2	Chandpai	4248	2576	1271	249	151	4482	4143	311	28
3	Chila	4363	1414	1430	1122	396	4688	3241	333	40
4	Mithakhali	4292	1053	1954	1066	228	4790	2989	1801	92
5	Sunaitala	2439	1169	1019	79	172	2744	2378	366	0
6	Sundarban	4277	1437	1902	762	176	4829	3360	1438	33
<b>Total</b>		<b>23446</b>	<b>10084</b>	<b>8750</b>	<b>3423</b>	<b>1196</b>	<b>24952</b>	<b>18449</b>	<b>5255</b>	<b>268</b>



## Human Resources supports for Water and Sanitation Services (gbe mpu`)

**Table 5.4: Department of Public Health:**

	SAE-DPHE		Mechanic		Mason		Remarks
	San.	Exis.	San.	Exis.	San.	Exis.	
Mongla upazila	1	1	3	3	2	2	

**Source: Public Health** (Note: San: Sanction, Exis: Existing)

### 6.0 Mapping of NGO programs:

SI #	Name of NGO	Address	Contract Person	Programme / Project	Major Activities	Working Area
01	Community Development Centre (CODEC)	Digraj, Mongla	Mr. Bidhan Kumar Hawlader, District Coordinator	<ul style="list-style-type: none"> <li>Health</li> <li>Education</li> <li>Emergencies</li> <li>Manusher Janno Prokalpo</li> </ul>	<ul style="list-style-type: none"> <li>Health</li> <li>Education</li> <li>Emergencies</li> <li>Manusher Janno Prokalpo (Trg, Awareness)</li> </ul>	All union of Mongla upazila
02	Resource Intermigration Centre (RIC)	Shehalabuni a, Mongla		<ul style="list-style-type: none"> <li>Micro Finance</li> </ul>	<ul style="list-style-type: none"> <li>Micro Finance</li> </ul>	All unions
03	BRAC	Shehalabuni a, Mongla		<ul style="list-style-type: none"> <li>Health</li> <li>BRAC education program</li> </ul>	<ul style="list-style-type: none"> <li>Health</li> <li>Water and Sanitation</li> <li>School program (Primary and pre-primary)</li> </ul>	All union of Mongla upazila
04	World Vision Bangladesh	Shehalabuni a, Mongla		<ul style="list-style-type: none"> <li>Sponsorship</li> <li>Health</li> <li>Emergencies</li> <li>Child Safety net project</li> <li>WatSan</li> </ul>	<ul style="list-style-type: none"> <li>Education</li> <li>Health</li> <li>Emergencies</li> <li>Child Safety Net</li> <li>Child and Women Trafficking Protection</li> <li>Water and Sanitation</li> </ul>	All union of Mongla upazila
05	CARITAS	Kanaimary, Mongla			<ul style="list-style-type: none"> <li>Micro credit</li> <li>Emergencies</li> <li>Pre-primary education</li> </ul>	All union of Mongla upazila
06	Rupantar	Shehalabuni a, Mongla		<ul style="list-style-type: none"> <li>Women leaderships from grass root level</li> </ul>	<ul style="list-style-type: none"> <li>Build Women leaderships from grass root level</li> <li>Awareness activities</li> </ul>	All union of Mongla upazila

07	Muslim Aid	Shehalabuni a, Mongla	Mr. Hafizur Rahman, District Coordinator Mob. 01711526949	<ul style="list-style-type: none"> <li>● Micro Finance</li> <li>● Enhancing Resilience to Disaster and the effect of climate change Project (Emergencies)</li> </ul>	<ul style="list-style-type: none"> <li>● Interest free loan</li> <li>● Trg. Meeting, logistic support, day observance, education in emergencies, enhancing resilience</li> </ul>	Chila, Chandpai and Sonaitala union
08	Jagarani Chacro Foundation	Shehalabuni a, Mongla			<ul style="list-style-type: none"> <li>● Child Protection</li> <li>● Community Awareness</li> </ul>	Chandpai and Pourashava
9	Prodipon	Shehalabuni a, Mongla		<ul style="list-style-type: none"> <li>● Sundarban Development Project</li> <li>● Manusher Janno Foundation</li> </ul>	<ul style="list-style-type: none"> <li>● Rights on resource of Sundarban</li> <li>● Legal Aid support</li> <li>● Training, Community Awareness on climate change</li> </ul>	All unions
10	Nabolok Parishad	Shehalabuni a, Mongla			<ul style="list-style-type: none"> <li>● Micro credit</li> <li>● Forest Protection</li> <li>● Community Awareness</li> </ul>	All union and Pourashava
11	Bangladesh Najarin Mission	Shehalabuni a, Mongla		Emergencies and climate change	<ul style="list-style-type: none"> <li>● Disaster preparedness and Risk Reduction</li> </ul>	Chandpai, Chila, Sundarban and Burirdanga
12	Dhaka Ahsania Mission	Shehalabuni a, Mongla		<ul style="list-style-type: none"> <li>● Emergencies</li> <li>● Education</li> <li>● Climate change project</li> </ul>	<ul style="list-style-type: none"> <li>● Trg. Meeting, logistic support, day observance, education in emergencies, enhancing resilience</li> <li>● Pre-primary education</li> <li>● Awareness, training etc</li> </ul>	All union
13	Action on Disability and Development (ADD)	Shehalabuni a, Mongla			<ul style="list-style-type: none"> <li>● Livestock and Fisheries</li> <li>● Food Production and Nutrition</li> <li>● Advocacy on effect of climate change and adoption</li> <li>● Emergencies</li> </ul>	Mongla Pourashava and Chila union
14	Area Development Organization (ADO)	Shehalabuni a, Mongla		Vulnerable Group Development (VGD)	<ul style="list-style-type: none"> <li>● Micro credit</li> <li>● Awareness on IGA</li> <li>● Ensure allocated food</li> </ul>	All unions
15	Social Edification of Benign Association	Malgazi, Mongla	Ms. Mina Halder Executive	<ul style="list-style-type: none"> <li>● Promotion of water supply, sanitation and hygienic in hard to</li> </ul>	<ul style="list-style-type: none"> <li>● Water, Sanitation and Hygienic</li> <li>● Education</li> <li>● Health (Primary health service)</li> </ul>	All unions

	(SEBA)		Director House # 62, Khanjahan Ali Road, Khulna	reach area of Bangladesh ● Social forestry	<ul style="list-style-type: none"> <li>• Rice seed production and delivery</li> <li>• Plantation</li> <li>• Savings and credit</li> </ul>	
16	Bangladesh Association for Sustainable Development (BASD)	Shehalabuni a, Mongla		Capacity Enhancement and Resource Integration for Area Resilience (CERIAR)	<ul style="list-style-type: none"> <li>• Community Capacity building</li> <li>• Microcredit, HIV/AIDs</li> <li>• Emergencies</li> </ul>	Chandpai, Chila union and Mongla Pourashava
17	Christian Service Society (CSS)	Makordhona, Mongla			<ul style="list-style-type: none"> <li>• HIV/AIDs Prevention</li> </ul>	Chandpai and Mongla Pourashava
18	Afrin Foundation	Malgazi, Mongla		<ul style="list-style-type: none"> <li>● Rights of Water</li> <li>● Land and Agriculture reconstruction</li> </ul>	<ul style="list-style-type: none"> <li>• Training</li> </ul>	Chandpai and Mithakhali union
19	Durjoy Nari Shango	Mongla			<ul style="list-style-type: none"> <li>• Health and Awareness for floating sex worker</li> </ul>	Mongla Pourashava only
20	Gathon Samaj Kallayn Sangstha	Mongla		Child Sponsorships program	<ul style="list-style-type: none"> <li>• Education</li> <li>• Health</li> <li>• House construction</li> </ul>	Burirdanga, Chandpai, Sonaitala and Mithakhali union
21	Oriental Foundation	Mongla			<ul style="list-style-type: none"> <li>• Skills development training</li> </ul>	Burirdanga, Hurka Union and Pourashava

**(Note:** NGOs BRAC, Grammen Bank, SHEBA, NGO-Fourm, Caritas, World Vision Muslim Aid, Dhaka Ahsania mission, Nyazarin mission, CODEC, ADO, JCF, BASD, RIC, Rupantar etc are working in this upazil. There are lack of coordination in between NGOs and NGOs with GOB. Five NOGs were working on Emergencies (Disaster Management) and they assist to UzDMC to prepared “Union and upazila Action plan for Disaster Management.

## 7. Information on Partner NGOs for UNICEF Assisted Project

Name of NGOs	Name of the Project	Working Area (upazila)	Address	Contact Person(Name & Telephone)	Remarks
Jagorani Chacro Foundation (JCF)	Child Protection	Mongla Pourashava	314/269 (Ground Floor), C&B road, Sonatala, Bagerhat	A.K.M. Moniruzzaman (Mamun), Project Coordinator	UNICEF supported CFS 2 in two upazila

## 8. Partners Program Mapping

Name of Organization	Type of program	Working Area	Address and Contact Number	Focal Point contact Number
<b>Health &amp; Nutrition</b>				
H & FP Department	1. F-IMCI	1. All unions	UH&FPO, UFPO	
H & FP Department jointly with UNFPA	2. Joint MNH	2. All unions	UH&FPO, UFPO	
H& FP Department	3. EmOC Comprehensive 4. EmOC Basic 5. EPI 6. Vitamin - A	3. All unions 4. All unions 5. All unions	CS, DCS and UH&FPOs	
<b>Education</b>				
DPE	1. PEDP III (SLIP)	1. All unions	DPO and UEOs	
<b>Water &amp; Sanitation</b>				
Dhaka University	1. MAR	1. Chila and Sundarban union	USAE of DPHE	Piloting
<b>Child Protection</b>				
GOB JCF	1. BR 2. CFS 3. STIPEN	1. All unions 2. Mongla Pourashava 3. All unions		
<b>Communication for Development (C4D)</b>				
		1. All unions		

